



# TSA-1 Polyclonal Antibody

<b>Catalog No</b>	YP-Ab-13969
<b>Isotype</b>	IgG
<b>Reactivity</b>	Human;Rat;Mouse;
<b>Applications</b>	IF;ELISA
<b>Gene Name</b>	LY6E
<b>Protein Name</b>	Lymphocyte antigen 6E
<b>Immunogen</b>	The antiserum was produced against synthesized peptide derived from human LY6E. AA range:17-66
<b>Specificity</b>	TSA-1 Polyclonal Antibody detects endogenous levels of TSA-1 protein.
<b>Formulation</b>	Liquid in PBS containing 50% glycerol, 0.5% BSA and 0.02% sodium azide.
<b>Source</b>	Polyclonal, Rabbit,IgG
<b>Purification</b>	The antibody was affinity-purified from rabbit antiserum by affinity-chromatography using epitope-specific immunogen.
<b>Dilution</b>	Immunofluorescence: 1/200 - 1/1000. ELISA: 1/20000. Not yet tested in other applications.
<b>Concentration</b>	1 mg/ml
<b>Purity</b>	≥90%
<b>Storage Stability</b>	-20°C/1 year
<b>Synonyms</b>	LY6E; 9804; RIGE; SCA2; TSA1; Lymphocyte antigen 6E; Ly-6E; Retinoic acid-induced gene E protein; RIG-E; Stem cell antigen 2; SCA-2; Thymic shared antigen 1; TSA-1
<b>Observed Band</b>	
<b>Cell Pathway</b>	Cell membrane ; Lipid-anchor, GPI-anchor .
<b>Tissue Specificity</b>	Widely expressed, predominantly in liver, kidney, ovary, spleen and peripheral blood Leukocytes.
<b>Function</b>	induction:By retinoic acid; in promyelocytic leukemia NB4 and in myeloblast HL-60 cell lines. Activated by IFN-alpha in monocytic cell line U-937 and in peripheral blood monocyte cells.,similarity:Contains 1 UPAR/Ly6 domain.,tissue specificity:Widely expressed, predominantly in liver, kidney, ovary, spleen and peripheral blood Leukocytes.,
<b>Background</b>	induction:By retinoic acid; in promyelocytic leukemia NB4 and in myeloblast HL-60 cell lines. Activated by IFN-alpha in monocytic cell line U-937 and in peripheral blood monocyte cells.,similarity:Contains 1 UPAR/Ly6 domain.,tissue specificity:Widely expressed, predominantly in liver, kidney, ovary, spleen and peripheral blood Leukocytes.,



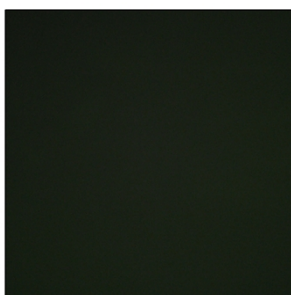
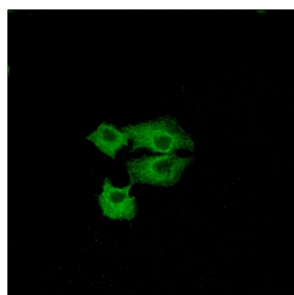
**matters needing attention**

Avoid repeated freezing and thawing!

**Usage suggestions**

This product can be used in immunological reaction related experiments. For more information, please consult technical personnel.

**Products Images**



Immunofluorescence analysis of A549 cells, using LY6E Antibody. The picture on the right is blocked with the synthesized peptide.